



**02** OWNER'S MANUAL  
**04** ILLUSTRATIONS  
**12** SPECIFICATIONS  
**12** TROUBLESHOOT

## Owner's manual

### Dear Customer,

Quality has always been our driving force and founding Argon Audio is a natural extension of this philosophy. We have 20 years' experience in creating and specifying high quality products, manufacturing them and selling them on to end users with Value-for-Money as the primary aim. And Argon Audio is a brand fully compliant with these values.

Design, features and quality standards are all specified in Denmark and manufacturing takes place in the Far East, where quality vendors are highly competitive - and as a result supply outstanding Value-for-Money products – to the delight of both ourselves and our customers!

### Introduction

Thank you for choosing Argon Audio loudspeakers, we hope they will bring you many years of enjoyment. Please read this manual fully before unpacking and installing the product.

### Unpacking

We have during production and packing carefully checked and inspected these loudspeakers.

After unpacking please check for any damage from transport.

We recommend that you keep the original carton box and packing material for any future shipping.

### Loudspeaker installation

The speakers are best used with the tweeters approximately at ear level when seated.

### Loudspeaker positioning

Variations in placement of your loudspeakers can produce dramatic differences in the way music sounds. No listening room is the same and therefore we encourage you to spend some time experimenting with which placements work best in your listening room. Trust your ears and be willing to experiment freely, you can not ruin anything.

You can start with our basic recommendations.

Please try to ensure that the room's surroundings of each loudspeaker left and right are similar in acoustic character. For example, if one loudspeaker is placed on bare walls while the other is placed close to soft furniture's and curtains, both the overall sound quality and the stereo image are likely to be compromised.

Because bookshelves are usually located close to the wall placement on bookshelves will often provide a richer, more full-bodied sound. In other words; you will get more Bass.

On the other hand, if you place the speakers free-standing You will get less Bass but a clearer sound.

To begin with, the speakers should be positioned between 1.5 m and 3 m apart at two corners of an equilateral triangle, completed by the listening area at the third corner. This is the optimal way of placement.

The Argon Octave 3A is designed to play single-standing, if the room is not too big.

In bigger rooms (+30 sqm) a subwoofer will need to be added in order to get optimal sound.

## Running-in period

We recommend a running-in time of your new Argon Octave 3A loudspeakers of approximately 15-20 hours at normal listening level before you decide on the final positioning of the loudspeakers. During the running-in time the drive units will settle in and perform as intended.

## Connecting your loudspeakers

We recommend that you read the manual of your other audio products carefully before connecting your loudspeakers. Please switch off all equipment when connecting your loudspeakers.

The speaker binding posts on the terminal accepts wire up to Ø 4mm or cables with banana plugs.

Make sure that positive terminal binding posts on the Passive speaker (marked + and colored red) are connected to the positive output terminal binding posts on the Active speaker and that the negative terminals on the Passive speaker (marked – and colored black) are connected to the negative output terminal on the Active speaker.

Now you can connect the audio source you want.  
(read more about this on page 4 and forward).

## Care and cleaning

We don't recommend use of any solvents or cleaners on Argon Octave 3A cabinets, the cabinet surface usually only requires dusting or cleaning with a damp soft cloth (only use cold clean water).

Avoid touching the drive units, especially the tweeter, as damage may result.

## Environmental information

Argon Octave 3A loudspeakers comply with international directives on the Restriction of Hazardous Substances (RoHS) in electrical and electronic equipment and the disposal of Waste.

Electrical and Electronic Equipment (WEEE) - the crossed bin symbol indicates compliance and that the products must be appropriately recycled or processed in accordance with these directives.

## Safety instructions

*Please store this instruction manual for future reference.*  
Do not use this product near water or moisture. Clean only with a dry cloth. Unplug this product from the wall outlet before cleaning. Place the unit on a solid surface. Do not block any ventilation openings. Do not put it in a closed bookcase or a cabinet that may keep air from flowing through its ventilation openings. Do not install near any heat sources, such as radiators, heat registers, stoves or other appliances that produce heat. Protect the power cord from being walked on or pinched, particularly at plugs and the point where they exit from the product. Servicing is required when the product has been damaged. Do not attempt to service this product yourself. Opening or removing covers may expose you to dangerous voltages or other hazards. Please contact the manufacturer to be referred to an authorized service center near you. To prevent risk of fire or electric shock, avoid over loading wall outlets, extension cords, or integral convenience receptacles. Do not let objects or liquids enter the product. Use proper power sources. Plug the product into a proper power source, as described in the operating instructions or as marked on the product.

## Front panel, input indicators

Power ON/OFF LED

- Lights Blue when "ON"
- Lights Red when "OFF"

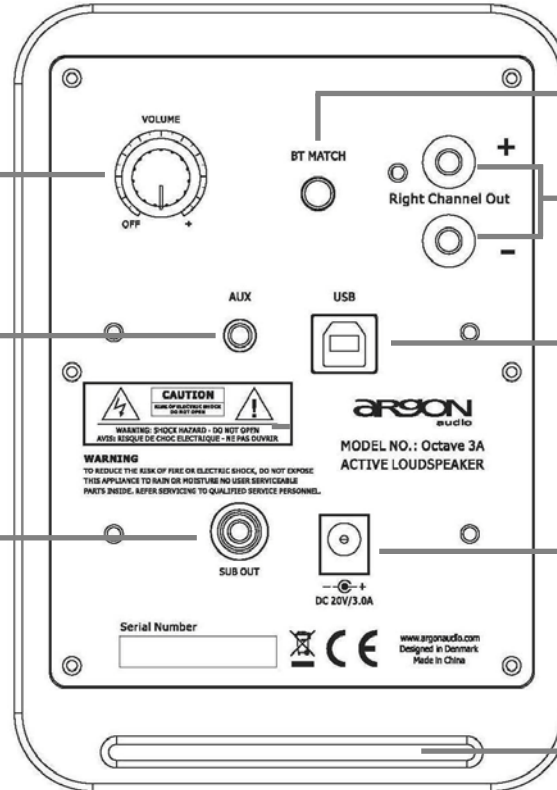


## Rear panel and connections

**Volume control and On/Off switch.**  
Turn the knob to adjust the volume up or down.  
Turn to power the speaker On or Off.

Analogue 3,5 Mini-Jack input for connecting iPod, MP3, PC etc

Output for active subwoofer



Bluetooth disconnect and ready for discover mode

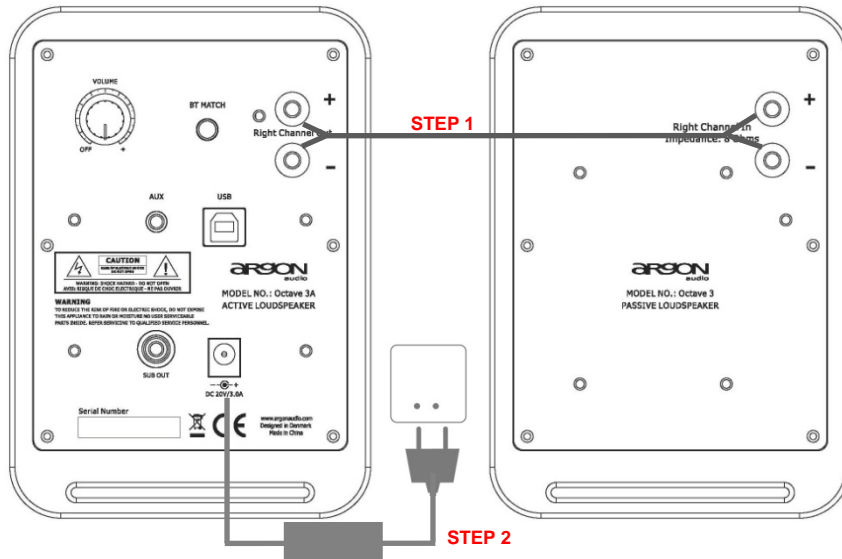
Connection to (right) Passive speaker

USB Audio connection for connecting digitally to a Laptop/PC. USB plug type B.

Main Power connection. For connecting the external power adapter.

Bass port that enhances the bass. Do not block this port.

## Connecting your speakers



### STEP 1

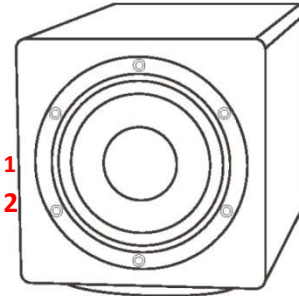
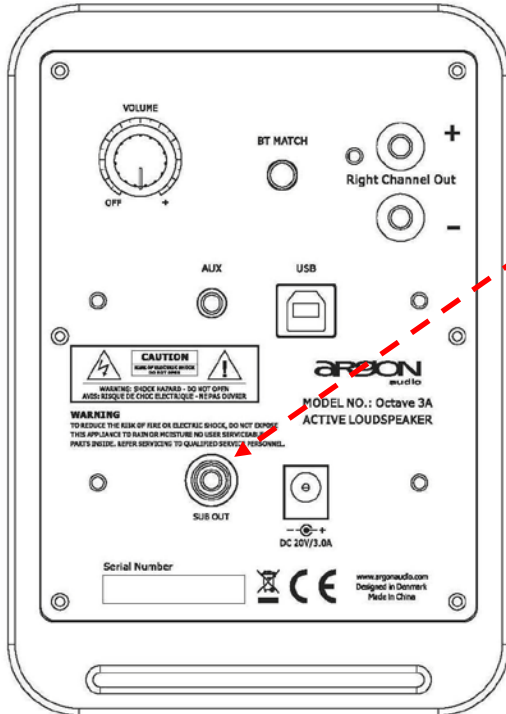
Connect the RED (+) and BLACK (-) terminals from the left speaker to the corresponding terminals on the right speaker using at least decent speaker cable, to enhance sound quality. Insulation on cable must be stripped on all ends.

Note: Because this Argon system is self-powered, do not connect the speaker terminals to the speaker outputs of a stereo receiver.

### STEP 2

Connect the power adapter into the left speaker and the other end into the wall outlet.

## Connect your Argon Octave 3A to a subwoofer



### CONFIGURATION (connecting subwoofer using RCA plugs mono or stereo)

Connect the single RCA plug to your Argon Octave 3A.

Your subwoofer might have input for one RCA plug just like there is only one RCA output plug from the Argon Octave 3A. Connect using this single RCA plug at both ends.

Your Subwoofer might have a Left and Right input. In this case you can choose two options. Option 1 is to use the single RCA connection and you can choose either L or R input and leave the other one unplugged.

Option 2 is to get a cable with one RCA plug at one end and two RCA (L and R) at the other end for connecting to the Subwoofer.

To make things simple, we recommend you to use only one RCA at both ends, even though your subwoofer might have both an L and R input.

## Use of Audio inputs on Argon Octave 3A

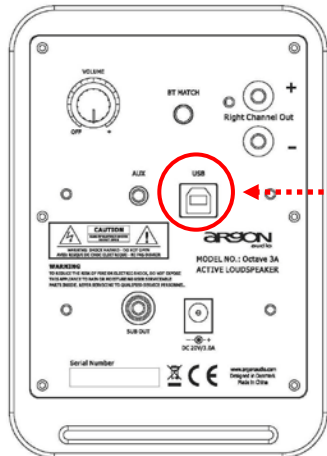
Your Argon Audio Octave 3A has 3 different audio inputs:

1. USB Audio input
2. Analogue 3,5 mm mini jack input
3. Bluetooth Audio, wireless input

Notice; Argon Audio Octave 3A, **does not** have an input selector.

All 3 inputs are connected and open at any time when the speaker is turned on. This means that if you play music via more than one input at the same time, then the speaker will play from all inputs at the same time.

## Use of USB Audio connection



## USB AUDIO

Your Argon Audio Octave 3A is equipped with a USB Audio Digital input (shown marked no.1 on the drawing) A USB Audio Digital input means that you can connect a PC and directly play digital audio content from the PC. Conversion of the signal from digital to analogue would normally happen in the PC, but often the D/A conversion quality in PC's are of poor standard.

Argon Audio Octave 3A has a quality build in D/A converter that ensures you optimal sound quality when using USB digital audio. Using USB Audio ensures you that the D/A conversion happen in the speaker and not in the PC.

## Connecting to a Windows based Laptop/PC

After connecting with USB cable to on your Laptop/PC, Windows will install the driver by itself.

However, to activate the new device you need to go into "Sound" settings on your Laptop/PC, either through the Windows Control Panel or via the "Speaker" icon in the task bar in Windows.

In Sound setting click on "USB Audio Dac" (which is the Octave 3A). Choose "set as default" and click OK.

If you want to know more about USB and USB AUDIO you can check:

<http://en.wikipedia.org/wiki/USB>





## Use of analogue audio connection

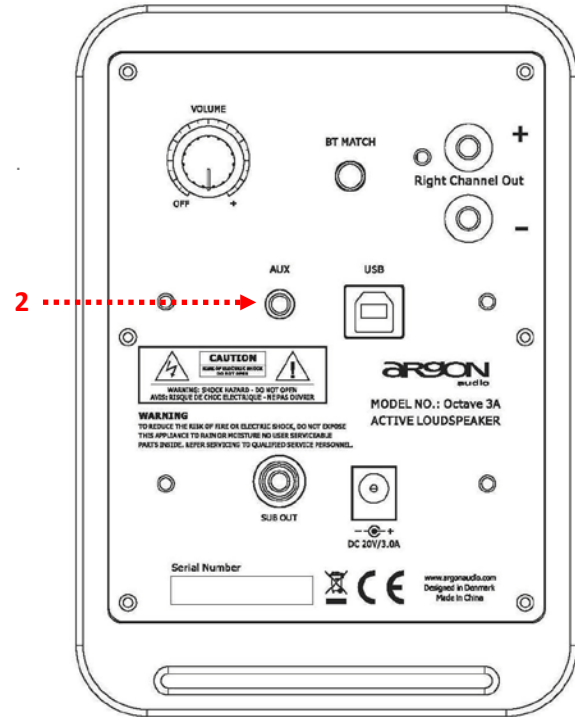
### Analogue audio connection

Your Argon Octave 3A is equipped with a 3,5 mm mini jack analogue audio input.

\*2 is mini-jack 3,5 mm stereo input. Typically for use for connecting an iPod, Mp3 Player, PC or TV, but can also be used for DVD, CD etc.

Notice; if possible always use a cable that has 3,5 mm mini jack at both ends. This ensures that the input signal has the optimal sensitivity. If you combine 3,5 mm mini jack at one end with RCA stereo connectors at the other end, you might experience that the sound signal is lower than normal.

Note that most new TV remotes can control the Argon Octave 3A active speaker volume if connected to variable TV audio out and to this mini-jack 3,5 mm stereo input.



## Use of Bluetooth audio connection

### Pairing and connecting Bluetooth

- Turn on the Argon Octave 3A
- A Blue light will show in the front display-eye
- Activate Bluetooth on your mobile/tablet/pc etc
- Activate “make device discoverable” on your mobile/tablet/pc etc
- Make your mobile/tablet/pc etc search for Bluetooth devices
- “Argon Octave 3A” will show up in the display as “found”
- Tap on the “Argon Octave 3A” text on the mobile/tablet/pc etc to pair
- When paired tap again on the “Argon Audio Octave 3A” text to Connect
- Your mobile/tablet/pc etc will now show Argon Audio Octave 3A “connected to media playback”
- Start playback on the mobile/tablet/pc etc.

### A few things to be aware about

- Before search, pair and connecting a new device, disconnect any other already connected devices. Disconnect it on your mobile/tablet/pc etc. or disconnect by pressing the “BT MATCH” button on the back of Argon Audio Octave 3A
- It’s also recommended to press the “BT MATCH” button if you change to play from a USB or analogue connected source.
- If you connect your Argon Audio Octave 3A to a PC/Laptop via Bluetooth, there might be a few things you need to be aware about, all depending on what operating system you have on your PC/Laptop
- After having connected the (following the connection process already described), you might need to activate the Argon Octave 3A as default playback device on your PC/Laptop. You do this by:
  - Opening the “Sound” settings menu from either “Control panel” or from the desk top taskbar in Windows (clicking the symbol indicating a speaker).
  - In the window that pop-up chose “playback” tab.
  - If Argon Octave 3A is already connected, two or more playback devices will be shown. Argon Octave 3A will be named as “Bluetooth hands free audio”.
  - Click on the device indicator and choose “set as default”, and you are ready to go.

## Play back via Bluetooth

- Any music player app can be used for play back. However there are a lot of music player app's out there and some are not really and some are beta apps. These can have issues when used with Bluetooth. So we recommend to use music player apps that come preinstalled with your mobile/tablet/pc etc
- It is recommended that you set the volume level on Argon Octave 3A at a rather high level and use your mobile/tablet/pc etc to adjust the play back volume.

Notice; if you have connected Argon Octave 3A via Bluetooth to a Windows based PC/Laptop.

Argon Octave 3A will automatically connect to your PC/Laptop when it's turned on. To avoid this you need to disconnect Argon Octave 3A in the PC/Lap top Bluetooth settings

## Operating Argon Octave 3A

### Power on-off/Volume control

NOTICE this knob/button has TWO FUNCTIONS:

- 1) Turn power o/offn, by **turning the knob**, first step and it gives a click.
- 2) Controlling volume by **turning** the knob towards + or -

### Controlling the volume

The main volume on Argon Octave 3A is adjusted on the back side of Argon Audio Octave 3A.

It is recommended that you set the volume level on Argon Octave 3A at a rather high level and use your mobile/tablet/pc etc app to adjust the play back volume.

Regarding TV sound, most TV remotes can control the Argon Octave 3A active speaker volume if connected to variable TV audio out and to the 3,5 mm mini jack input on Argon Octave 3A.

Argon Octave 3A will always start up on the last used play back source, unless it's not connected or turned on anymore.

### Manually turn Argon Octave 3A ON or OFF

Turn the volume knob all the way down to turn Off and you will hear a click.

From Off position turn the volume knob up until you hear a click, and the Speaker is now in On mode-

## Specifications Argon Octave 3A

Tweeters: 0,75 inch Silk Dome with Neo magnet  
Woofers: 2,5 inch paper cone  
Nominal Impedance: 8 Ohm  
Sensitivity: 2,83V (/1W/1m) 84 dB  
Amplifier Type: Class D with ext. power adpt (20V DC @ 3A)  
Power Output: 20 Watts RMS per channel  
Input Sensitivity: 350 mV  
Total Harmonic Distortion: < 0.3%  
Crossover System: 2-way  
Crossover Frequency: 3 kHz  
Frequency Response: 70 Hz - 20 kHz  
Bluetooth: 3.0  
Outputs: 1 x Subwoofer  
USB Audio 2,0  
Speaker Terminals: Left and Right Binding Posts  
Input Voltage / Frequency: AC 100V-240V 50/60 Hz  
Standby Power Consumption: < 0.5 W

## Basic Troubleshooting

### If the LED does not light up, check...

that the AC power cord is firmly plugged into the rear panel and wall outlet.

to make sure the speaker rear panel power switch is ON.

that the speaker is getting power from the wall outlet.

that the rear panel match to the operating voltage.

the fuse in the AC IN on the rear panel. If the fuse needs to be replaced it is extremely important to replace only with same fuse type and value.

### If no sound output, check...

that the speaker is turned on (blue LED illuminated)

to make sure the right speaker is connected correctly to the left.

that the volume on the speaker back panel is not all the way down.

the volume level on the iPod or other audio source it not at 0 level..

that there is music playing on your iPod or other audio source player.

### If bass output is low, check...

speaker wire polarity (verify that wires are going to same terminals on both speakers)

that the speaker placement is not too close to a wall or other obstruction.

that the bass ports on the rear panels are not blocked by a rodent or jelly sandwich.

### If no output from right speaker, check...

that the speaker wire is properly connected from the left to right.

Check by removing the speaker wire from both terminals on each speaker and reconnecting.